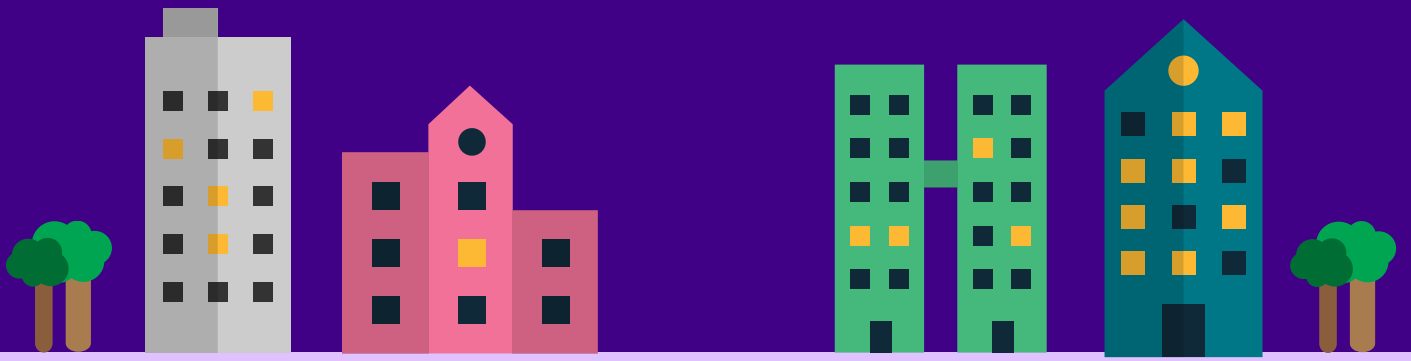


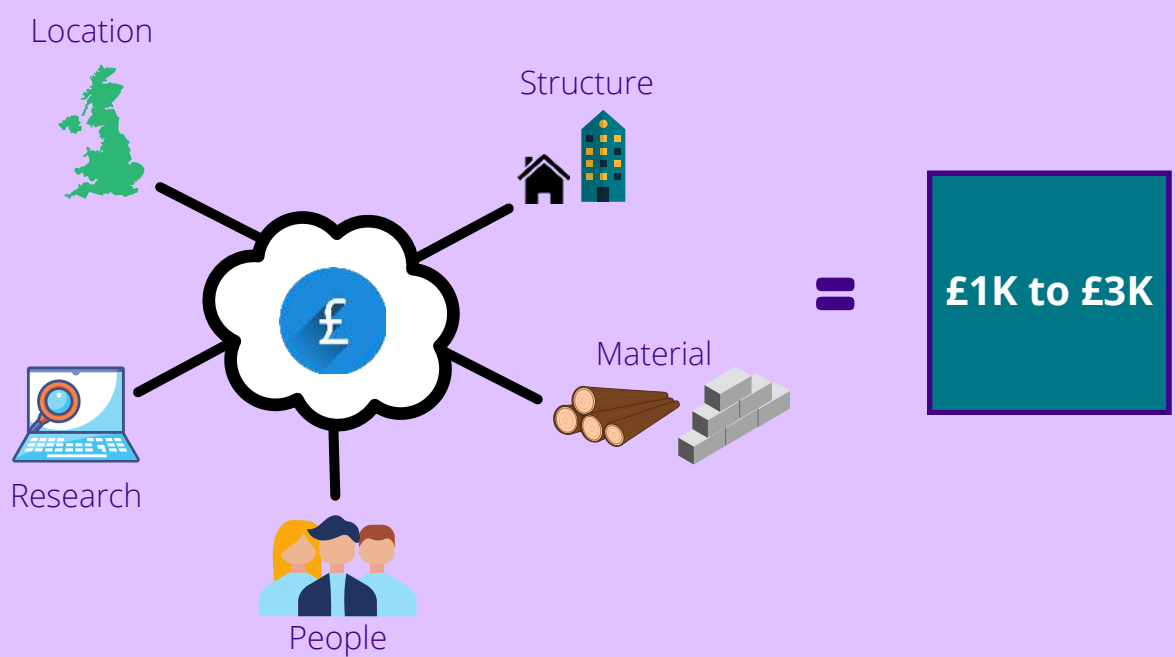
TOP 5

Questions you need to ask when considering a private domestic building project



HOW MUCH?

SHOULD I EXPECT THE BUILDING PROJECT TO COST?



DO I NEED PLANNING?

YES!



SEEK ADVICE FROM YOUR LPA

HOW LONG?

SHOULD THE BUILD TAKE?

**30
WEEKS**

MONTH 1	Set up build site, foundations, footings & oversite, external works
MONTH 2	Scaffolding & structural systems, first floor construction
MONTH 3	Superstructure construction
MONTH 4	Roof structure/tiling, weathertight
MONTH 5	First fix, plastering/tacking
MONTH 6	Plastering/tacking, internal fit out
MONTH 7	Second fix, painting, decorating & landscaping
MONTH 8	Second fix, painting, decorating & landscaping
MONTH 9	Completion & post contract work including snagging
MONTH 10	Completion & post contract work including snagging





WHAT EFFECTS

IS COVID-19 HAVING AN EFFECT ON MATERIAL & LABOUR COSTS?



WHO?

HOW DO I CHECK IF MY PREFERRED BUILDER IS REPUTABLE, RELIABLE & FINANCIALLY SOUND?



RECOMMENDATION



AUTHORITATIVE BODY



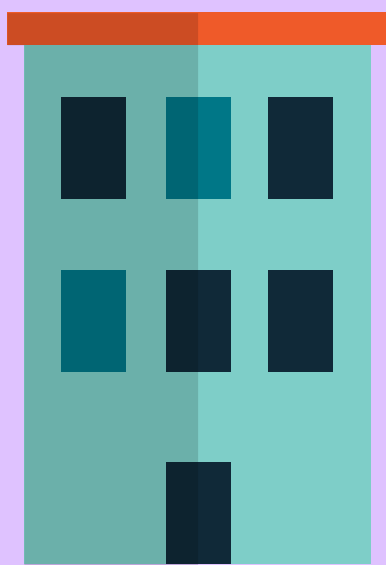
RESEARCH



MINIMUM 3 QUOTES



DECISION MADE



WANT TO LEARN MORE?

SYNDICATE GROUP SOUTHERN HAVE THE KNOWLEDGE AND EXPERTISE TO HELP YOU ON YOUR JOURNEY

CONTACT US TODAY TO DISCUSS YOUR DEVELOPMENT PROJECT

023 92 250399



Syndicate Group
southern

TOTAL TURNKEY SOLUTIONS



WWW.SYNDICATE-GROUP.CO.UK